

## BioClean 2X MULTIPURPOSE CONCENTRATE

a versatile multi-purpose liquid bacterial concentrate formulated with a non-ionic surfactant for use in a variety of applications

### overview

BioClean 2X MULTIPURPOSE CONCENTRATE is an effective multi-purpose bacterial concentrate which may be used in a variety of applications. It is formulated with a non-ionic surfactant, which provides excellent detergency and flexibility. The application-specific bacterial package chosen for this series is a blend of Bacillus spores, all of which have been selected for accelerated degradation capabilities of organic compounds such as grease, fats, proteins, starch, sugars and cellulose.

### advantages of BioClean 2X MULTIPURPOSE CONCENTRATE

optimized proprietary bacterial consortium degrades a broader spectrum of substrates

highly effective eco-benign™ formulation - product is readily biodegradable

product is safe for users and the environment

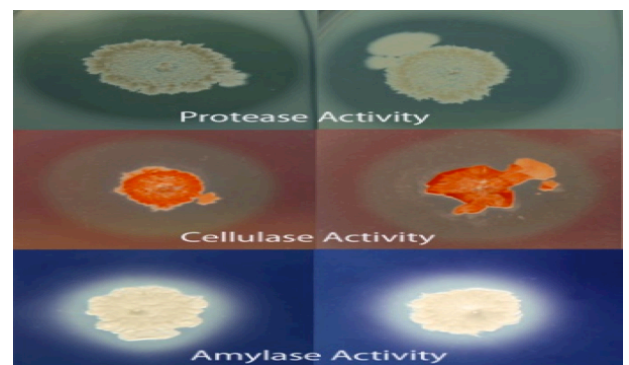
effectively formulated using minimal levels of buffering agent, giving excellent product stability and improved shelf life

can be used effectively in typical further compounding applications

manufactured under strict quality control standards to ensure high quality and purity

### applications

- grease traps and drain maintenance
- hard surface cleaners
- septic tank treatments
- odor control
- animal waste treatments
- wastewater treatments
- laundry detergents



This series of pictures shows why the range of enzymes produced by the bacteria in **BioClean 2X MULTIPURPOSE CONCENTRATE** is useful for multiple applications. The top pictures show protease activity; protease enzymes produced by the bacterial colony degrade the insoluble protein and create clearance zones. The second pair of pictures shows similar results on degradation of cellulose again forming a clearance zone due to cellulase production, and the final pair of pictures shows degradation of starch, dyed with iodine to make it more visible. The amylase produced by the bacteria again causes a clear zone around the colony.